

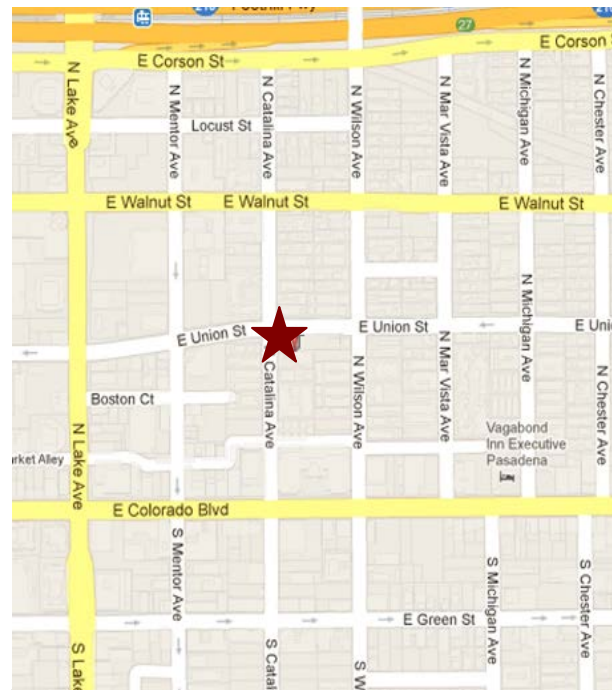
UNION CATALINA BUILDING



1010 EAST UNION STREET, PASADENA, CALIFORNIA

FOR LEASE

- AVAILABLE SPACE:** Suite 110 approx. 2,305 rentable sq. ft.
- RENTAL RATE:** \$2.30 per sq. ft., Modified Gross.
- Tenant shall pay its prorata share of utilities and liability insurance.
- AVAILABLE:** Immediately.
- PARKING:** Five (5) free reserved parking spaces in subterranean garage.
- FEATURES:**
- * Recently renovated common areas and new restrooms.
 - * Monument signage possible.
 - * Charter Cable served building.
 - * Responsive Management on-site.
 - * Security Cameras throughout.
 - * Elevator Served.
 - * Short walk to Lake Avenue and Colorado Boulevard retail and restaurants.
 - * Close proximity to "Gold Line" Station.



For Further Information, Contact:

Carole Walker
cwalker@redstonecre.com
License No. 01525534

Dan Alle
dalle@redstonecre.com
License No. 01017941

(626) 795-2255



Redstone

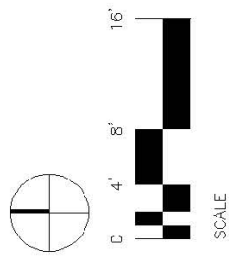
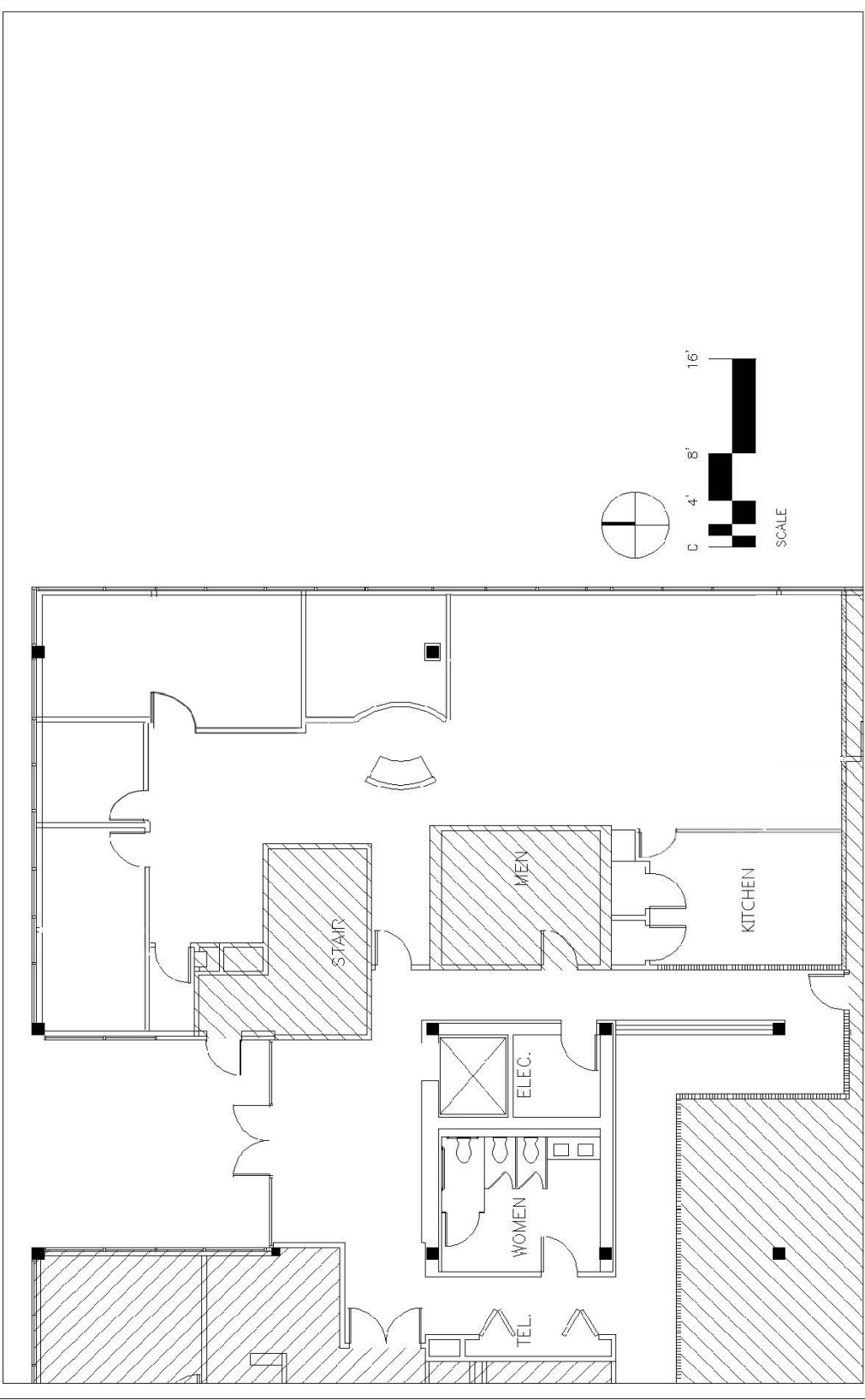
COMMERCIAL REAL ESTATE



www.redstonecre.com

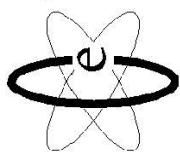
301 N. Lake Avenue, Suite 1000, Pasadena, CA 91101

(626) 795-2255 Tel



SCALE

VACANT
 1010 E. UNION ST, SUITE 110
 PASADENA, CA



Creative Energy
 architecture and interiors
 241 East Colorado Boulevard, Suite 203
 Pasadena, California 91101
 phone 626.304.0505 fax 626.304.0715