

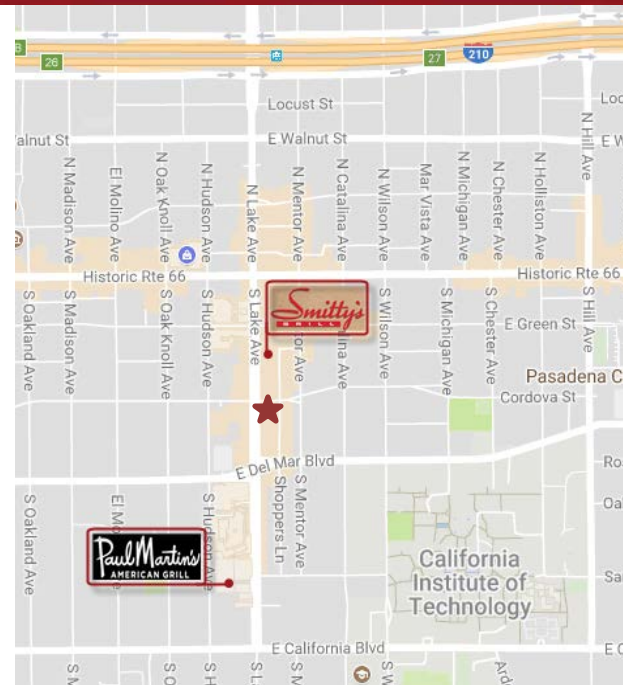
# LAKE CORDOVA BUILDING



200 – 202 SOUTH LAKE AVENUE, PASADENA, CALIFORNIA

FOR LEASE

- AVAILABLE SPACE:** Suite 294 - Approx. 994 rentable sq. ft. Open area, two (2) window offices and storage.
- RENTAL RATE:** \$2.75 per sq. ft., Full Service Gross.
- AVAILABLE:** Immediately.
- YEAR BUILT:** 1961. Renovated in 2016.
- PARKING:** Accessible to City controlled lot behind building at \$75 per space per month. Parking available at Corporate Center parking structure across the street at \$90 unreserved and \$130 reserved per space per month.
- FEATURES:**
- \* Three City blocks South of Goldline Station.
  - \* Walking Distance to The Shops on Lake Avenue and across the street for LA Fitness.
  - \* Easy access to the 210, 134 & 110 freeways.
  - \* Walking Distance to Macy's, Paul Martin, Celestino's, and Frisco Restaurants.



For Further Information, Contact:

**Carole Walker**  
cwalker@redstonecre.com  
License No. 01525534

**Dan Alle**  
dalle@redstonecre.com  
License No. 01017941

(626) 795-2255

**Redstone**  
COMMERCIAL REAL ESTATE

# 200 – 204 S. LAKE AVENUE



LOBBY



BUILDING CORRIDOR

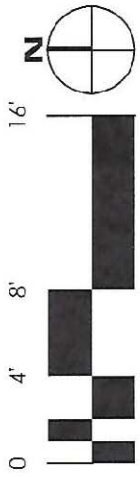


SUITE 294

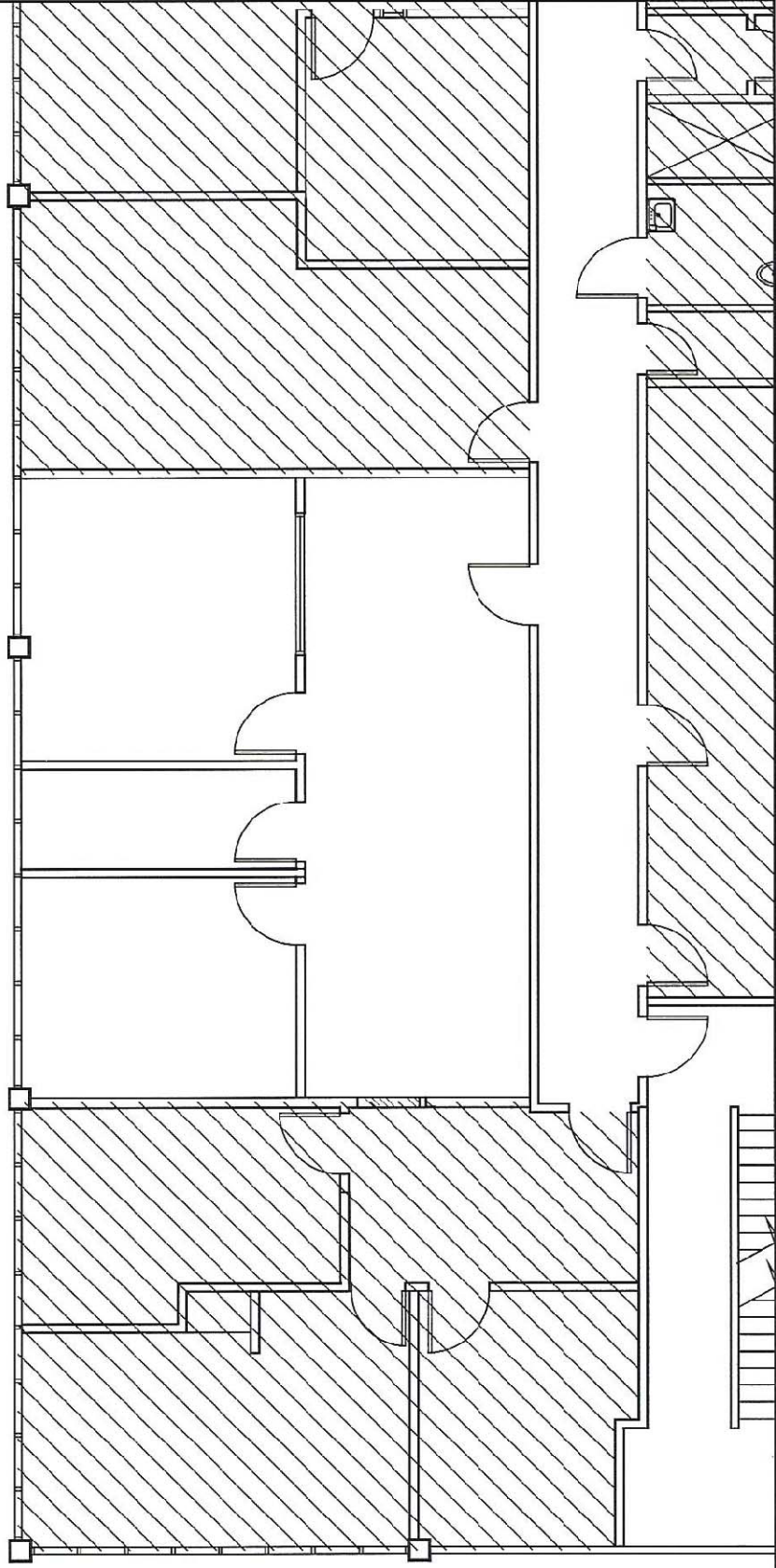


SUITE 294



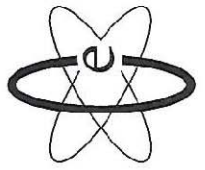


1/8" = 1'-0"



FLOOR PLAN  
202 S. LAKE AVE. #294  
PASADENA, CA 91101

994 R.S.F.



**Creative Energy**  
architecture and interiors  
241 East Colorado Boulevard, Suite 203  
Pasadena, California 91101  
phone 626.304.0505 fax 626.304.0715