

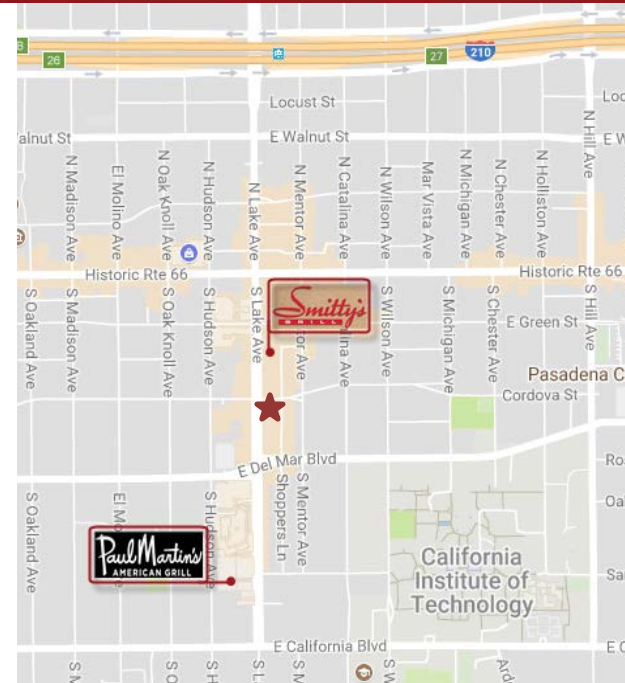
# LAKE CORDOVA BUILDING



200 – 202 SOUTH LAKE AVENUE, PASADENA, CALIFORNIA

FOR LEASE

- AVAILABLE SPACE:** Suite 280 - Approx. 462 rentable sq. ft.
- RENTAL RATE:** \$2.85 per sq. ft., Full Service Gross.
- AVAILABLE:** May 1, 2019.
- YEAR BUILT:** 1961. Renovated in 2016.
- PARKING:** Accessible to City controlled lot behind building at \$75 per space per month. Parking available at Corporate Center parking structure across the street at \$90 unreserved and \$130 reserved per space per month.
- FEATURES:**
- \* Three City blocks South of Goldline Station.
  - \* Walking Distance to The Shops on Lake Avenue and across the street for LA Fitness.
  - \* Easy access to the 210, 134 & 110 freeways.
  - \* Walking Distance to Macy's, Paul Martin, Celestino's, and Frisco Restaurants.



For Further Information, Contact:

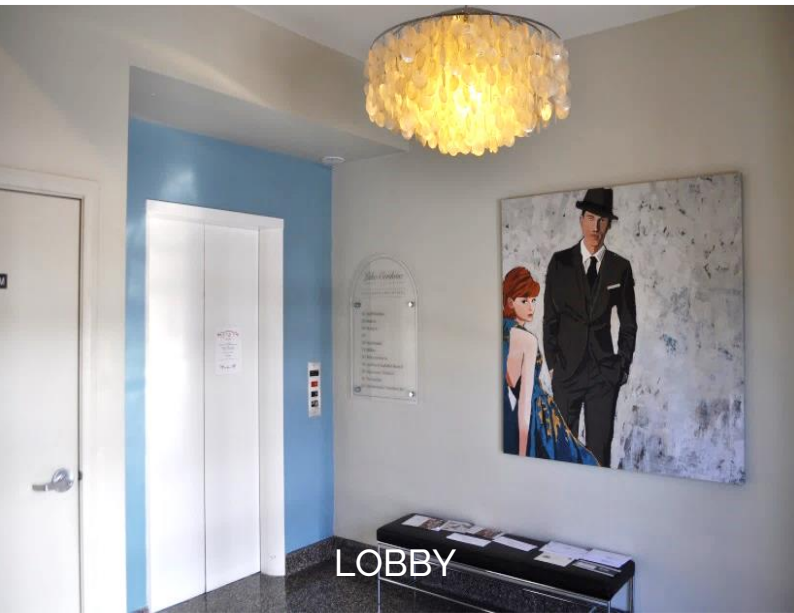
**Carole Walker**  
cwalker@redstonecre.com  
License No. 01525534

**Dan Alle**  
dalle@redstonecre.com  
License No. 01017941

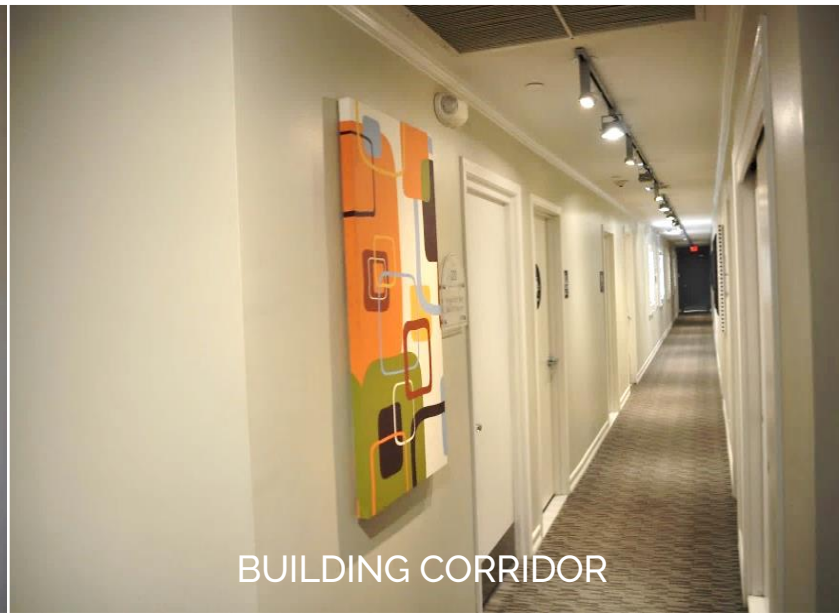
(626) 795-2255



# 200 – 204 S. LAKE AVENUE



LOBBY



BUILDING CORRIDOR

# 202 S. Lake Avenue

Suite 280

