

# GROUND FLOOR SPACE FOR LEASE



## 2623 E. FOOTHILL BOULEVARD, PASADENA

FOR LEASE

- AVAILABLE SPACE:** Approximately 2,250 sq. ft.
- YEAR BUILT:** 1948.
- LEASE RATE:** \$1.90 per sq. ft., Modified Gross. Tenant will pay its own utilities, janitorial, and liability insurance.
- TOTAL BLDG:** 11,503 sq. ft.
- PARKING:** Four (4) reserved parking spaces free of charge in rear lot.
- AVAILABLE:** July 15, 2018.
- AMENITIES:**
- \* Fully air conditioned.
  - \* Ideal for production, tech companies, R&D, engineering and other creative office uses.
  - \* Close to 210 Freeway.
  - \* Close proximity to East Pasadena retail and restaurants.
  - \* Excellent signage.



For Further Information, Contact:

**Carole Walker** **Dan Alle**  
cwalker@redstonecre.com dalle@redstonecre.com  
License No. 01525534 License No. 01017941  
**(626) 795-2255**

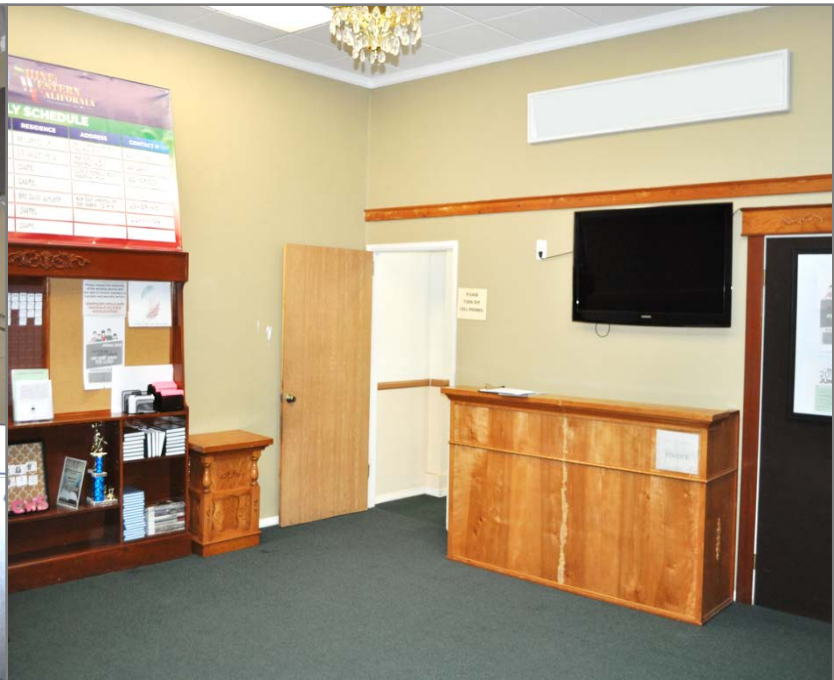
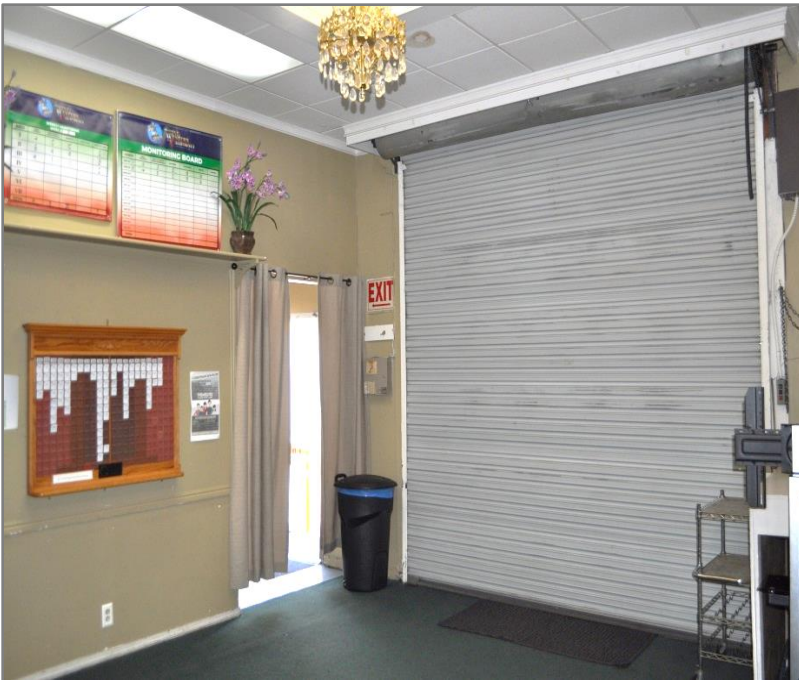
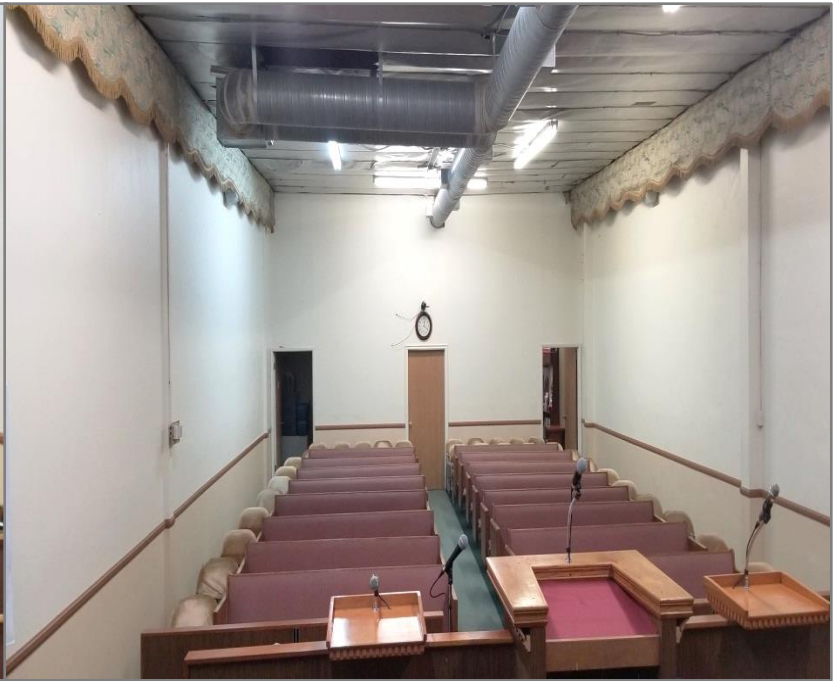
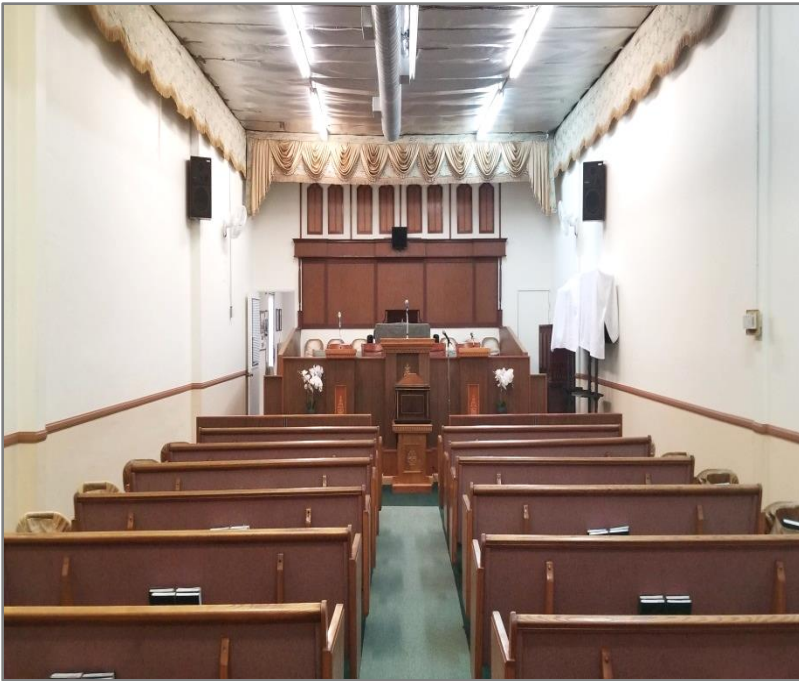


DO NOT DISTURB TENANT. PLEASE CALL AGENT FOR APPOINTMENT.

All information contained herein is from sources deemed reliable but has not been verified and is submitted without any warranty or representation, expressed or implied, as to its accuracy, and Redstone Commercial Real Estate, License #01525534, assumes no liability for errors or omissions of any kind, change of price, rental or other conditions, including, without limitation, prior sale, lease or financing or withdrawal without notice. This presentation is for information only and under no circumstances whatsoever is to be deemed a contract, note, memorandum or any other form of binding commitment.

# Redstone

COMMERCIAL REAL ESTATE



[www.redstonecre.com](http://www.redstonecre.com)

301 N. Lake Avenue Suite 1000, Pasadena, CA 91101

Tel. (626) 795-2255 | Fax (626) 795-2251

FOOTHILL BLVD.

SIDEWALK

