

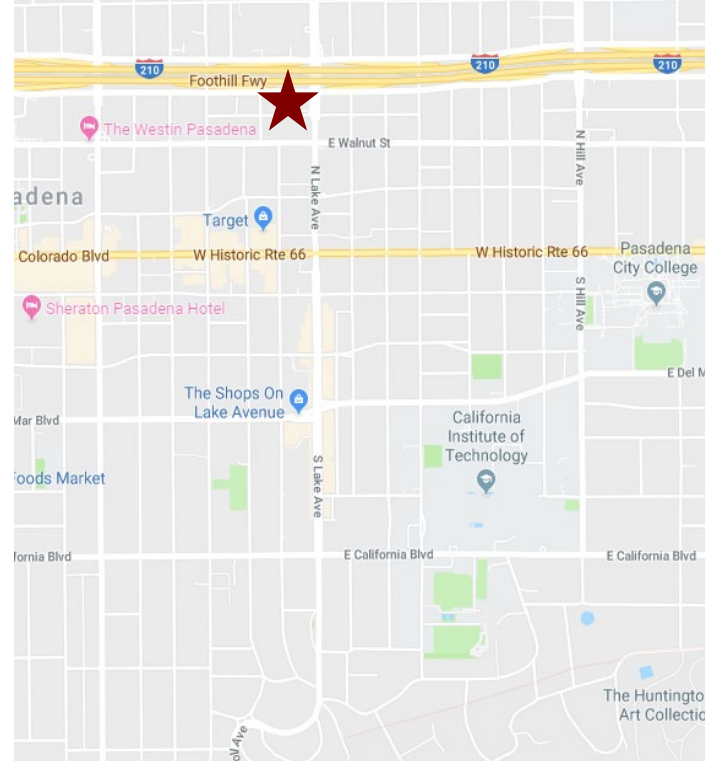
# EXCEPTIONAL CLASS A OFFICE SPACE FOR SUBLEASE



## 301 N. LAKE AVENUE, SUITE 420, PASADENA, CA

FOR SUBLEASE

- AVAILABLE SPACE:** Approximately 3,100 sq. ft.
- SUBLEASE RATE:** \$2.75, Full Service Gross per sq. ft. per month.
- AVAILABLE:** Immediately.
- EXPIRATION:** May 31, 2024.
- PARKING:** \$95 Unreserved  
\$150 Reserved
- AMENITIES:**
- \* Reception, eight (8) window offices, open area for five (5) cubicles, conference room, telecom room, and kitchen area.
  - \* Furniture and equipment available.
  - \* Walking distance to Lake Avenue restaurants and retail.
  - \* Across the street from Gold Line Station and 210 freeway.
  - \* 24-hour Security Guard.
  - \* Recently renovated patio with WIFI, tables & chairs.



For more Information, Contact:

Dan Alle

[dalle@redstonecre.com](mailto:dalle@redstonecre.com)

Lic. # No. 01017941

Carole Walker

[cwalker@redstonecre.com](mailto:cwalker@redstonecre.com)

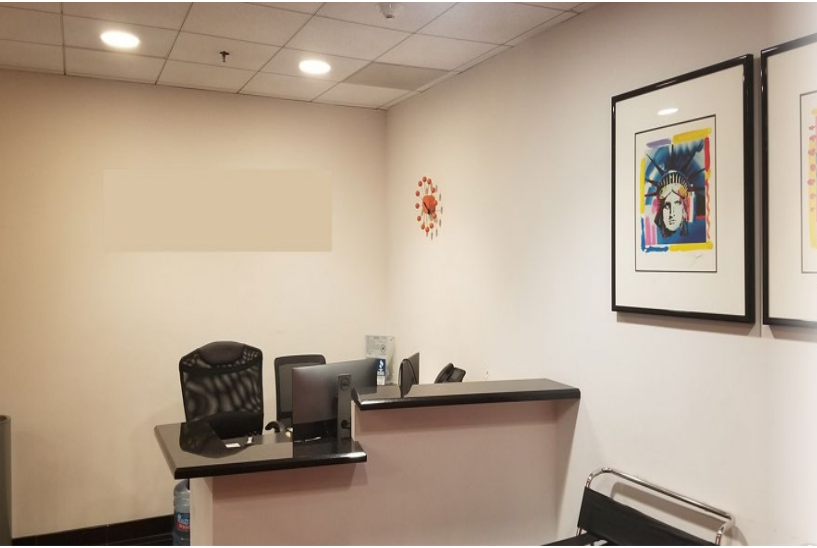
Lic. # No. 01525534

**(626) 795-2255**

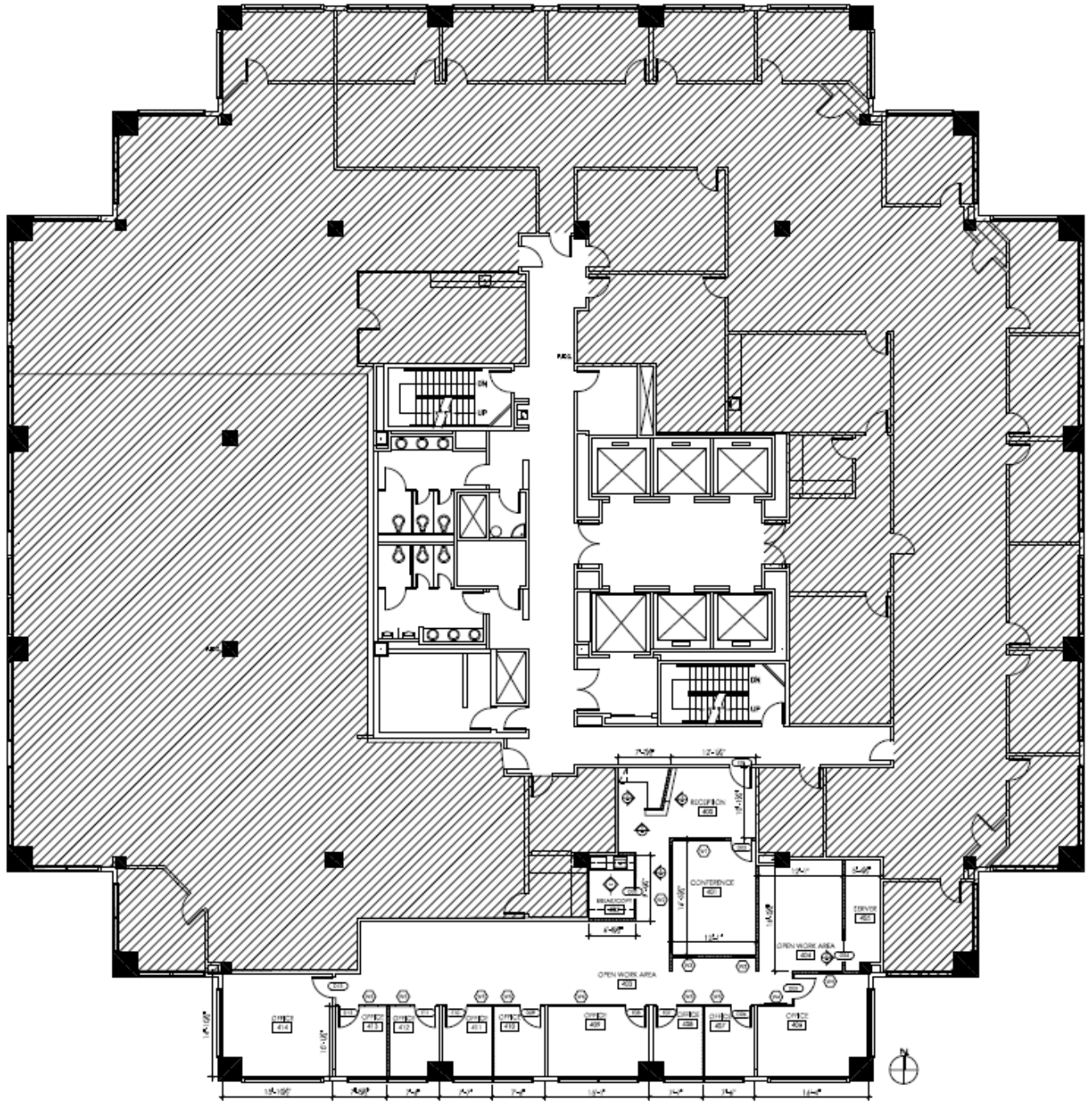
All information contained herein is from sources deemed reliable but has not been verified and is submitted without any warranty or representation, expressed or implied, as to its accuracy, and Redstone Commercial Real Estate, License #01525534, assumes no liability for errors or omissions of any kind, change of price, rental or other conditions, including, without limitation, prior sale, lease or financing or withdrawal without notice. This presentation is for information only and under no circumstances whatsoever is to be deemed a contract, note, memorandum or any other form of binding commitment.

# 301 N. LAKE AVENUE

## SUITE 420



301 N. LAKE AVENUE, SUITE 420  
FLOOR PLAN



PARTITION PLAN

1/8" = 1'-0"