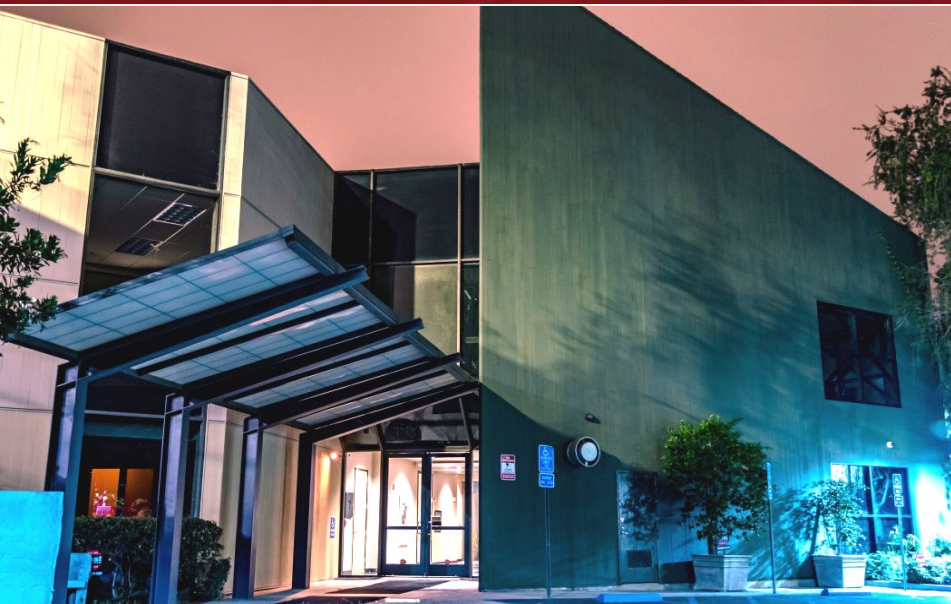


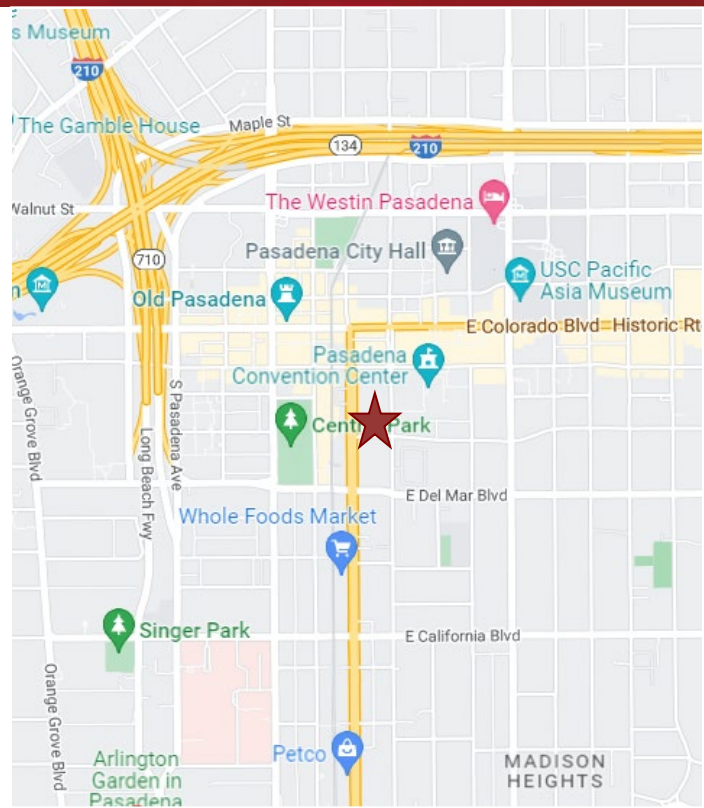
OFFICE FOR LEASE



150 S. ARROYO PARKWAY, PASADENA, CA

FOR LEASE

- AVAILABLE SPACE:** Suite 100 - Approximately 4,064 sq. ft.
- LEASE RATE:** \$2.85 per sq. ft., Full Service Gross.
- AVAILABLE:** September 1, 2024.
- PARKING:** Eleven (11) reserved parking spaces at no cost.
- AMENITIES:**
- * Beautiful lobby.
 - * Abundance of light with numerous windows.
 - * State of the art security cameras for lobby area and parking areas.
 - * Walking distance to Houston's, Parkway Grill, Whole Foods, Old Town Pasadena retail.
 - * AT&T fiber access.
 - * Easy access to 210 and 110 freeways.



For more Information, Contact:

Dan Alle

dalle@redstonecre.com

Lic. # No. 01017941

(626) 483-6358

Julie Alle

jalle@redstonecre.com

Lic. # No. 01889085

(626) 864-3927

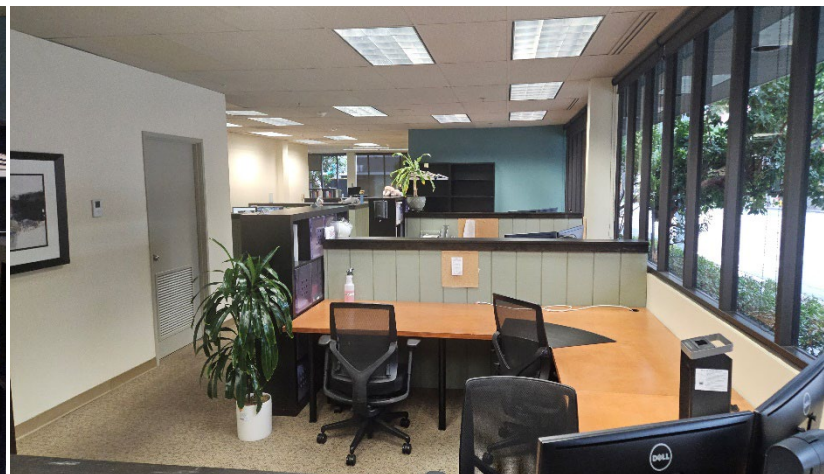


**DO NOT DISTURB TENANT.
PLEASE MAKE APPOINTMENT WITH BROKER.**

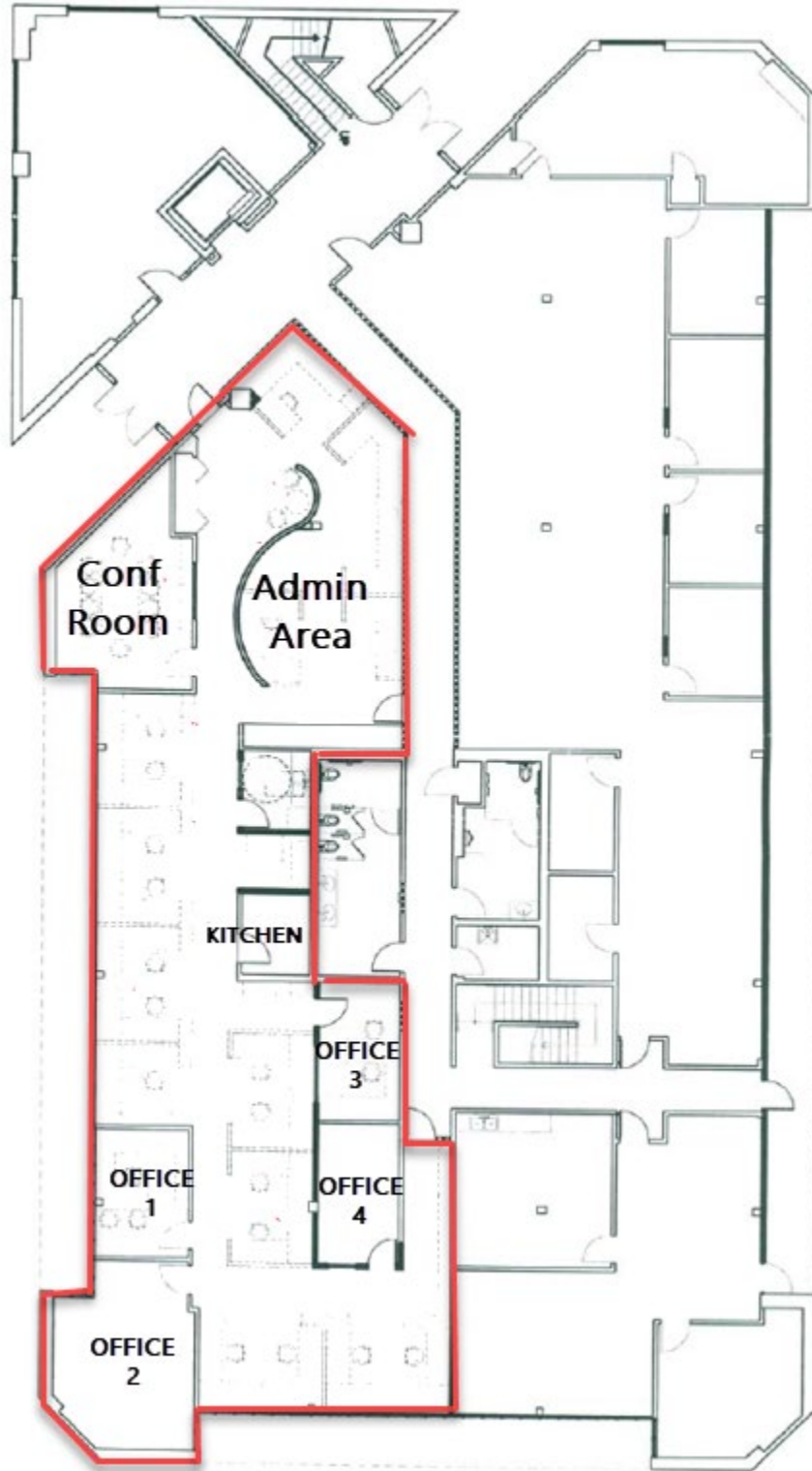
All information contained herein is from sources deemed reliable but has not been verified and is submitted without any warranty or representation, expressed or implied, as to its accuracy, and Redstone Commercial Real Estate, License #01525534, assumes no liability for errors or omissions of any kind, change of price, rental or other conditions, including, without limitation, prior sale, lease or financing or withdrawal without notice. This presentation is for information only and under no circumstances whatsoever is to be deemed a contract, note, memorandum or any other form of binding commitment.

150 S. ARROYO PARKWAY

SUITE 100 - INTERIOR PICTURES



150 S. ARROYO PARKWAY
SUITE 100



150 S. ARROYO PARKWAY



Amenity Map



AERIAL VIEW OF 150 S. ARROYO PARKWAY

